

THOMAS J. ALEXANDER, M.D., F.A.C.P., F.A.C.G.
MICHAEL C. DUFFY, M.D., F.A.C.P., F.A.C.G.
ATULKUMAR S. PATEL, M.D., F.A.C.P., F.A.C.G.
GREGORY W. KULESZA, M.D.
MICHAEL E. CANNON, M.D., F.A.C.P.
DAREK A. LAZARCZYK, M.D.
G.M. GHAITH, M.D.

264 W. MAPLE ROAD,
SUITE 200
TROY, MI 48084-5435
(248) 273-9930
FAX: (248) 273-9931
www.gjdrs.com

THIS PROCEDURE WILL BE CANCELLED
IF THE PERSON THAT ACCOMPANIES
YOU LEAVES THE PREMISES

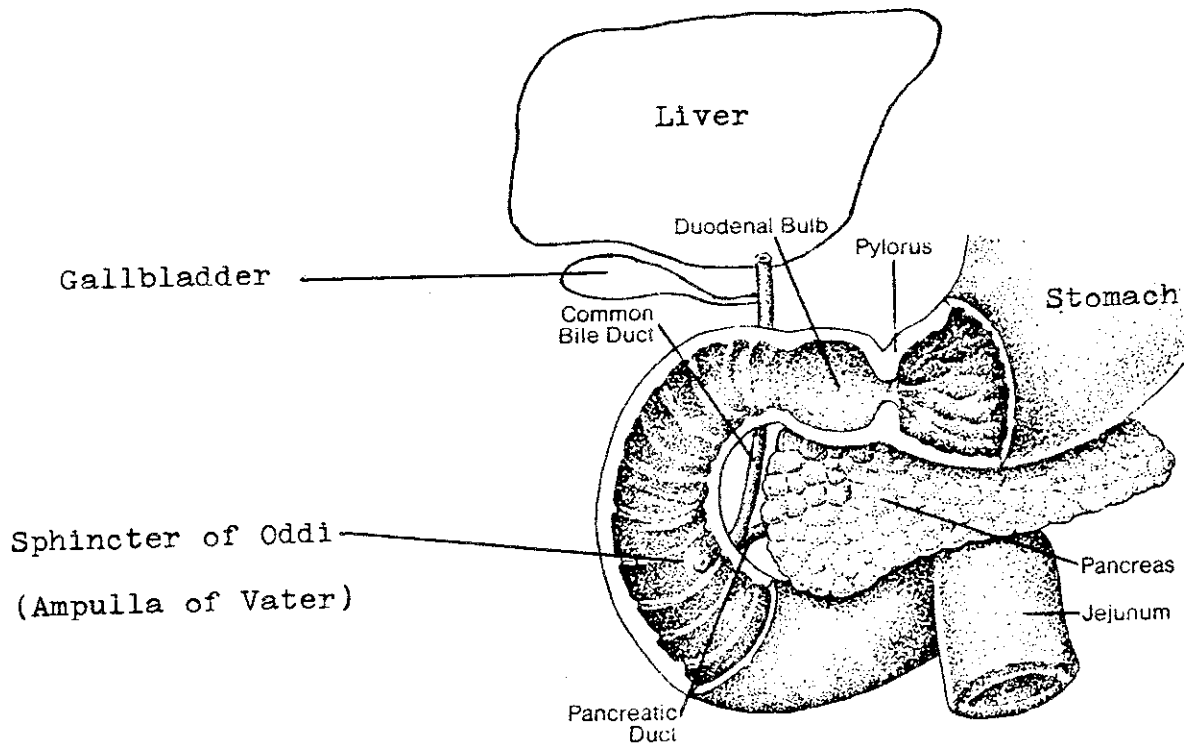
INSTRUCTIONS FOR PATIENT HAVING ENDOSCOPIC
RETROGRADE CHOLANGIOPANCREATOGRAPHY (ERCP)

You are scheduled to have an endoscopic examination to obtain x-rays of the ducts of the pancreas and the bile ducts (leading from the liver into the gallbladder and intestine). A long flexible tube is passed through the mouth into the stomach and into the duodenum. By looking through this tube (duodenoscope), the outlet of the pancreatic and bile ducts is located and a small, hollow tube is passed through the instrument and into the opening of the duct. Contrast material ("x-ray dye") is injected into the duct and x-ray films are taken showing the anatomy of the ducts. The procedure may take fifteen minutes to an hour or longer and the success rate is about 90%.

Preparation for the test requires that you be fasting; you must not eat or drink for about six hours before the examination. You may be given medication that will partially numb your throat. You will receive a tranquilizer, Valium (or Versed) and Demerol, intravenously, in a dose sufficient to cause drowsiness. In addition, you may be given Glucagon intravenously to quiet the movements of the intestine and to relax the opening of the duct. If you have had an unfavorable reaction to any of these drugs, you should tell the examining physician before the test begins. At the conclusion of the test, you will be returned to the endoscopy recovery area. You may resume your diet after numbness has left your throat. Begin with clear fluids, boullion, gelatin, or very soft foods. If not nauseated, you may go to soft foods. Avoid greasy/spicy foods.

This procedure is generally well tolerated. However, certain complications can rarely occur such as: Perforation, bleeding, cardiac or pulmonary reactions, strokes, pancreatitis, cholangitis, or infection. A national survey of 8,000 examinations revealed complications in 3% and deaths in 0.2%. Complications may require medical treatment in the hospital for a number of days. In certain instances, a prolonged hospital stay may be necessary. Very rarely, surgical treatment may be necessary for severe complications.

This particular examination makes available to doctors information which can be obtained in no other way. It has been very helpful in many of our patients in proving the presence of pancreatic disease and in demonstrating obstruction of bile ducts by stones, tumor, or scar tissue. A normal study excludes these possibilities with a high degree of accuracy.



PREPARATION FOR ERCP

AVOID ASPIRIN COMPOUNDS, IBUPROFEN, AND SIMILAR ANTI-ARTHRITIC MEDICATIONS FOR ONE WEEK PRIOR TO THE PROCEDURE.

1. Nothing to eat or drink after midnight. (Your usual heart or blood pressure medication may be taken with a small amount of water at 6:00 a.m.)

2. If your exam is after 12:00 noon, you may have a clear liquid breakfast, taking your usual morning medications. You must then stop liquids and take nothing more by mouth after 8:30 A.M.

3. Report To _____

4. Date: _____

5. Time: _____

6. You must be accompanied by someone who can stay the entire time you are there and drive you home afterwards.

7. IF YOU MUST CHANGE YOUR SCHEDULED TIME OR CANCEL THIS APPOINTMENT, PLEASE CONTACT THIS OFFICE AT 273-9930 EXT. 3034 or 3036

MEDICATION RECORD

NAME: _____

Endoscopy nurses will be asking for the medications you are presently taking. They will need to know the name of the medication and the dose. Please fill out this form completely and bring this with you for your endoscopic procedure. It is quite important that you be complete and accurate in filling out this form. We appreciate your assistance in this matter.

DATE: _____

Medication Name (on bottle)	How are you taking this medication? (Dose)
1)	
2)	
3)	
4)	
5)	
6)	
7)	
8)	
9)	
10)	